



# 22 Galiant Homes | APOGEE

## ABOUT THE HOME

Atop the hill in beautiful Bridle Bit Ranch sits Galiant Homes' latest achievement. This contemporary Colorado mountain home boasts 6,000 square feet of family living with plenty of space to entertain and stretch out. Through Apogee's grand entrance of a glass pivoting door, visitors are greeted by unbelievable views of Pikes Peak and the Air Force Academy. Galiant Homes' design/build team has artfully positioned the home to maximize the views from every room.

The main living area includes a two-story fireplace, an oversized sliding glass wall to the expansive concrete deck, a gourmet kitchen with a large eat-in island, a dining room with unobstructed views, a cozy office, a family entrance and a guest suite. The master suite is just the right size for retreating from a long day with its own fireplace, a luxurious en-suite bathroom with heated floors and more views of the mountains to make you feel you are a world away.

The lower-level living provides a floorplan ideal for entertaining, complete with a multimedia space, a gym with climbing wall, a ping pong area and a swanky whiskey bar. There are three more en-suite bedrooms rounding out this five bedroom, five-and-a-half bath home.

Apogee's contemporary interior features spill out into the more than 3,000 square feet of outdoor living space. All the amenities you want are here with an outdoor grill and tandoor area, comfortable sitting areas, two firepits, relaxing hot tub and areas for yard games and lounging.

## THE BUILDER

Luxury & style awaits you... Galiant Homes is a true custom home builder with an emphasis on one-of-a-kind designs, client relationships and artisan craftsmanship. An accomplished and award-winning team of architects, designers and builders come together to create the design/build dream team at Galiant Homes, producing unique luxury homes that fit your family's lifestyle. Styles ranging from traditional to contemporary, Galiant's design team leaves no stone unturned and helps their clients realize options they never would have considered. From South Denver to Colorado Springs, Galiant's team takes a client's vision from concept to reality anywhere along the Front Range. Come home to quality at GaliantHomes.com.

## THE INTERIOR DESIGN

Modern design mixed with Colorado touches and beautiful high-end finishes are just a small part of what you will love about this home. Galiant Homes' award-winning in-house designer Amy Nelson has curated luxury finishes and quality furnishings for this home that compliment the architecture and provide the homeowners with on-trend, comfortable, lasting style.

Wide, plank-wood flooring throughout sets the tone for this home dressed with beautiful custom cabinetry and built-ins. There are modern and unique lighting fixtures and a gourmet kitchen with an impressive steel hood. Luxurious fabrics, varying shades of wood, steel and stone are expertly used throughout the home, and the ultimate result is a retreat from the world that the family will enjoy for many years to come.



## GALIENT HOMES

719-445-6263

GaliantHomes.com



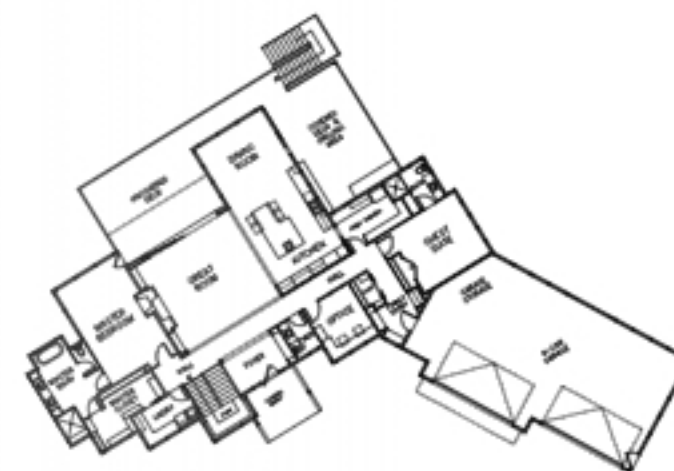
**12925 MORRIS TRAIL  
COLORADO SPRINGS, CO 80908**

**TOTAL SQ. FOOTAGE: 5,943 ft.<sup>2</sup>  
FINISHED SQ. FOOTAGE: 5,727 ft.<sup>2</sup>  
BEDROOMS: 5 BATHROOMS: 5.5**

**HOME DESIGN: Design Renaissance  
LANDSCAPE: Sunflower Landscape  
INTERIOR DESIGN: Galiant Interiors  
SELLING PRICE: N/A**

## TRADE PARTNERS

- |                           |                             |                            |                         |                          |
|---------------------------|-----------------------------|----------------------------|-------------------------|--------------------------|
| Affordable Water Systems  | Carpet Connection           | Fireplace Warehouse        | Mountain View Electric  | Specialty Appliance      |
| Alcal                     | Colorado Stonework          | Front Range Fireplace      | Omerta Storm Water      | Springs Concrete         |
| Ankmar                    | Compass Surveying & Mapping | Geoquest                   | Management              | Steel Craft              |
| Armando's Painting        | Creative Fabrications       | GP Framing                 | Ortega Concrete Forming | Sunflower Landscapes     |
| Armandos Cleaning         | Dahl Plumbing               | Granite Accents            | Paldama's Construction  | The Nehme Team, Platinum |
| Artistic Tile             | Don Hall Masonry            | Gulati Tandoors            | Pella Windows & Doors   | Group REALTOR®           |
| Bailey Land Solutions     | Double M Concrete           | Home Lighting              | Phelan Brothers         | The Sliding Door Company |
| Barton Supply             | Douglas County Septic DBA   | J. D. Plumbing & Heating   | Construction Pixvid     | Think Security           |
| Bill's Tool Rental        | Kallog Company              | Kunau Drilling             | Rood Construction       | Tree Beavers             |
| Black Hills Energy        | Drywall Solutions           | L&L Gas Shop               | Rowan Electric          | United Rentals           |
| Bob Ames Excavating       | Eden Oaks                   | McDonald's Lightning       | S & B Porta-Bowl        | United Site Services     |
| Brooks Brothers Cabinetry | Entech Engineering          | Protection                 | Restrooms               | Wayfair                  |
| Bush Excavating           | Fashion Hardwood Floors     | MIBAR Engineering          | Sherwin Williams        | Wallco Hardwoods         |
| C&O Window and Door       | Finesstra                   | Michael Orsillo Consulting | Six Walls               |                          |
| C&C Sand and Stone        |                             | Mitchell Heating Colorado  |                         |                          |



Main Level



Lower Level